

NT110 Firmware Install Manual (EN)

2D-53-00027800



About This Manual

Please know that this manual is subject to change without notice for the purpose of improving the quality of the product.

Copyright

Copyright © 2017 TAMURA Corporation. All Rights Reserved. Do not duplicate or replicate without permission.

Trademark

Windows is a registered trademark of Microsoft Corporation in the United States and other countries.

1. About this manual

This manual describes the environment for installing the NT110 Firmware and the installation procedure.

2. NT110 Firmware installation computer

In order to install NT110 Firmware you need a computer that meets the specifications in the table below.

Item	Request specs	Remarks
OS	Windows 7(32bit) / Windows10(64bit)	
CPU	1GHz or greater	
Memory	2GB RAM or greater	
Display	Resolution 1280x768 or greater	
Built-in Disk	100 MB or more free space	
LAN port	1port or greater, 1Gbps or greater	

3. Computer settings

Set the IP address of the computer.

1 Display the "Change adapter settings" from the control panel.

"Change adapter settings" is displayed when you select in the following order.

"Control Panel" - "Network and Internet" - "Network and Sharing Center" - "Change Adapter Settings"

2 Right-click the "Local Area Connection" and select "Properties".

3 Double-click the "Internet Protocol Version 4 (TCP / IPv4)".

4 Put a check in the "Use the following IP address" in the displayed "Internet Protocol Version 4 (TCP / IPv4) Properties" screen.

5 Then set the values in the table below and press "OK" button

LAN port 1 setting value

Item	Setting value	Remarks
IP address	192.168.1.150	
Subnet mask	255.255.255.0	

6 If the computer has two LAN ports, return to step 2 and set the values in the table below to LAN 2.

LAN port 2 setting value

Item	Setting value	Remarks
IP address	192.168.1.250	
Subnet mask	255.255.255.0	

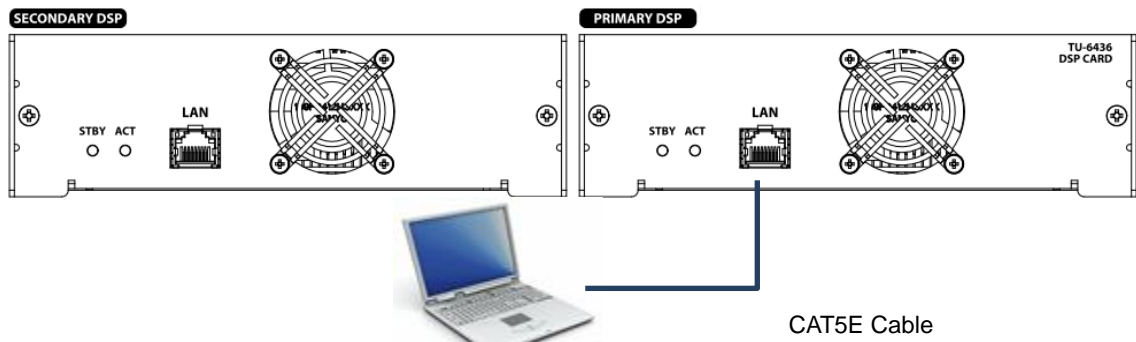
4. Connection between NT110 and computer

Connect the NT110 and the computer with a LAN cable of CAT 5E or higher.

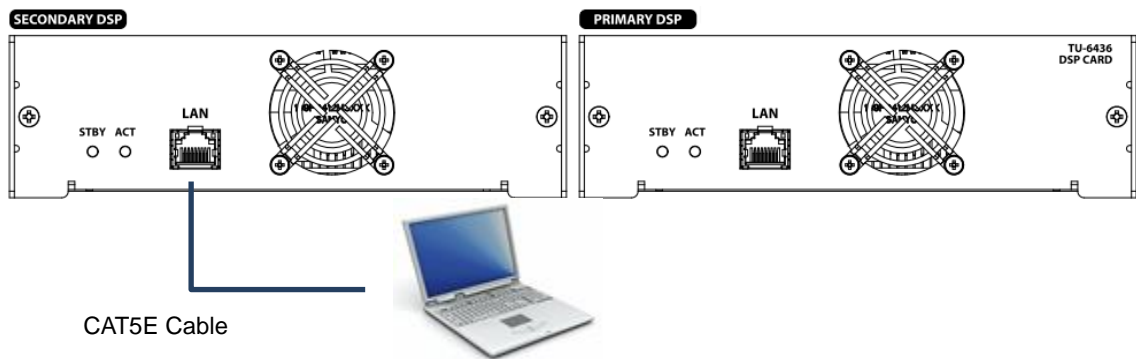
Please connect NT110 and computer directly without going through external equipment such as HUB.

If DSP CARD consists of two pieces, you need to install two DSPs respectively.

【Installation of PRIMARY DSP CARD】



【Installation of SECONDARY DSP CARD】



5. NT110 Firmware Installation Procedure

Follow the procedure below to install NT110 Firmware.

1 Connect the NT110 and the computer with the LAN cable and turn on the NT110

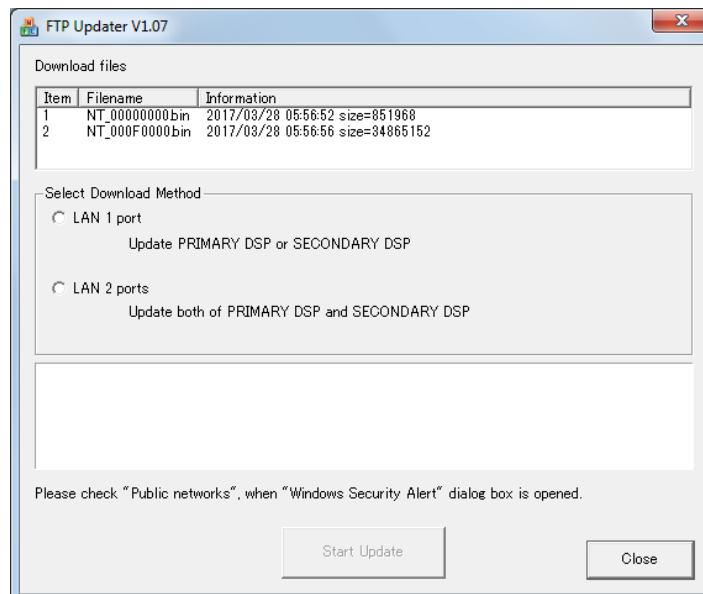
2 Unzip the compressed file containing NT110 Firmware (operate the computer)

When extracting the file, the following files are generated.

ftp_updater.exe
ftp_updater.updconf
NT_00000000.bin
NT_000F0000.bin

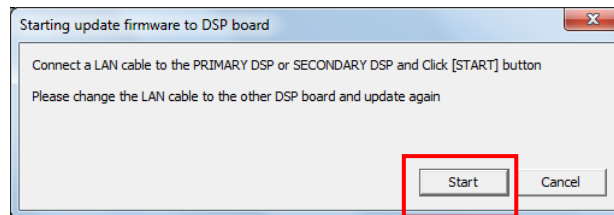
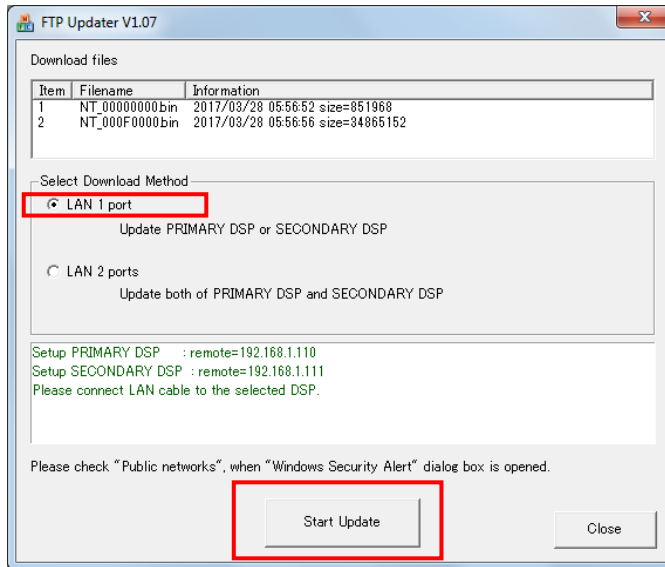
3 Double click on ftp_updater.exe file

The FTP updater is started.



4 Select LAN 1 port and press the Start Update button. When the message is displayed press the start button

The update will start.



【Caution】

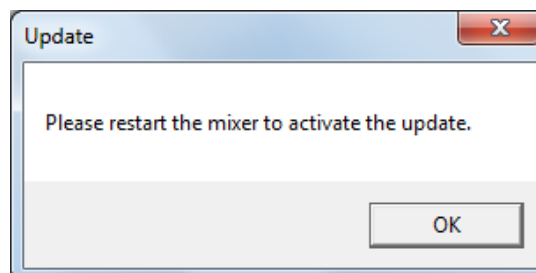
If "Windows Security Alert" is displayed after pressing "Start" button, please check the box of "Public networks" and allow access.

If you do not do this operation the update will not start even if you press the "Start" button.

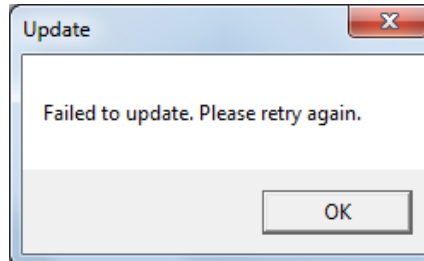
If updating does not start by mistake, change FTP updater temporarily, change the folder name of "folder where compressed files containing NT110 Firmware is extracted", and start over from step 3 again.

5 Wait for the update to finish.

If the message below is displayed, the update is over.

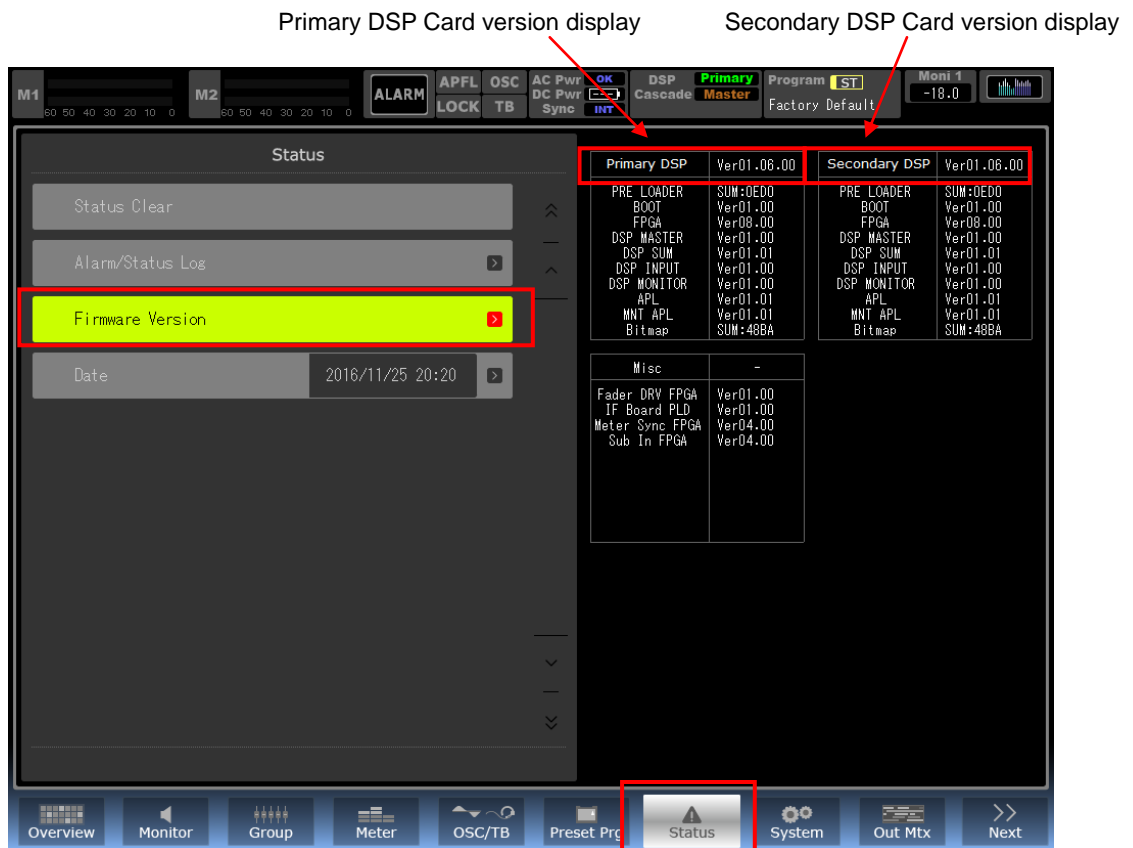


If the message below is displayed, no update has been done.
 Confirm the IP address setting of the computer, check the connection between the NT 110 and the computer, check that the NT110 power is on and update again.



6 If the DSP CARD consists of two, unplug the LAN cable connected to the DSP CARD, connect the LAN cable to the other DSP CARD, and update from Step 4 in the same way.

7 Turn on the NT110 power supply again. After startup, confirm that the version number displayed on the Touch Panel Status menu Firmware Version screen shows the updated version number.



This completes the installation of NT110 Firmware.